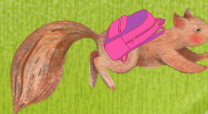


# September 2024

Activities to Support  
Early Learning Staff & Families



Sunday	Monday	Tuesday	Wednesday	Thursday	Friday	Saturday
<b>1</b> 	<b>2</b> Share Sept's Learning is Everywhere newsletter with families*	<b>3</b> Learn strategies to help children co-regulate.*	<b>4</b> Celebrate Better Breakfast Month with new breakfast ideas.	<b>5</b> Celebrate National Read A Book Day with a few of these favorites!	<b>6</b> PA KinConnector provides guidance, advice, & support for grandparents raising grandchildren	<b>7</b>
<b>8</b>	<b>9</b> September is Self-Care Awareness Month. Reflect on your positive traits.	<b>10</b> Tips to help children recognize their reactions during and after emergencies.	<b>11</b> Share with families the free app Vaccines on the Go: What You Should Know	<b>12</b> Learn what are the signs of trauma in children.*	<b>13</b> Reinforce with families how children learn through play.*	<b>14</b>
<b>15</b> National Hispanic Heritage Month begins now through Oct. 15*	<b>16</b> Reinforce praise, encouragement and rewards.	<b>17</b> Learn about September's Harvest Moon 	<b>18</b> Plan 20 Festive Fall Nature Crafts for Kids	<b>19</b> Encourage staff to learn how to apply a Trauma-Informed Care lens (free!)	<b>20</b> Tools and information to help kids before, during and after disasters.	<b>21</b>
<b>22</b>	<b>23</b> Share tax tips for new parents*	<b>24</b> Think about the classroom environment you would like to create.*	<b>25</b> Discover why it's important to support entire families*	<b>26</b> Share 5 steps to build a strong foundation in a child's brain*	<b>27</b> Encourage brief conversations at pick up and drop off*	<b>28</b>
<b>29</b>	<b>30</b> Share ways to handle tantrums*	September is National Preparedness Month to raise awareness about the importance of preparing for disasters and emergencies that could happen at any time. Find preparedness tips for <u>your early learning program</u> , <u>your health</u> , <u>your home</u> , and <u>your community</u> .				



\*Recommendations supporting the Pennsylvania Family Engagement Framework.